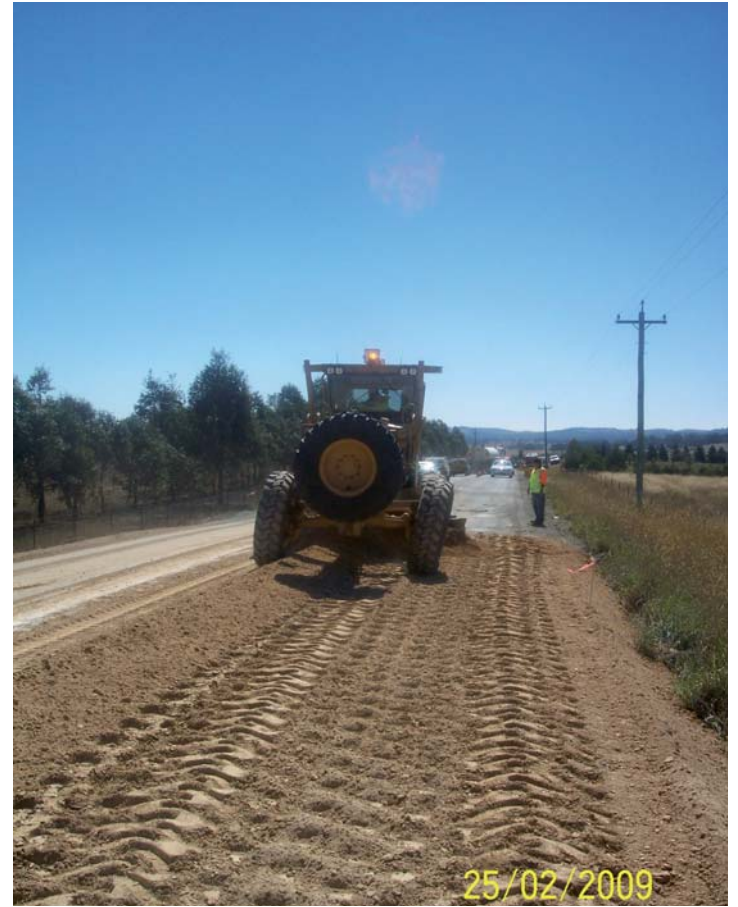


# Works Program



Burley Griffin Way rehabilitation west of Binalong Village (installing subsoil drainage)



Murrumbateman Road Rehabilitation (Gundaroo end)



Burley Griffin Way rehabilitation west of Binalong Village

## Gravel roads are unpredictable

Dust can reduce visibility and it takes longer to stop when braking in gravel.

Surfaces can be corrugated or potholed.

Bends and curves can have a build up of loose dirt or stones and passing vehicles can cause stone damage.

Keep left, slow down and take extra care on crests and corners to avoid collisions with other road users.

### Spiral Slide at Coronation Park Yass



Council recently refurbished the Miracle Spiral slide at Coronation Park in Yass.

This slide was originally donated to the Yass community approximately 30 years ago by the Apex Club of Yass. The slide was very well used over this period and was in need of urgent repairs. Therefore the slide was re-fibre glassed by a Canberra contractor and local Yass tradespeople fixed and painted the steelwork of the structure.

The slide has now been restored to its former glory days and many children and the odd adult are able to enjoy a great recreation experience.

Get a good grip on gravel roads.

# SLOW DOWN

